

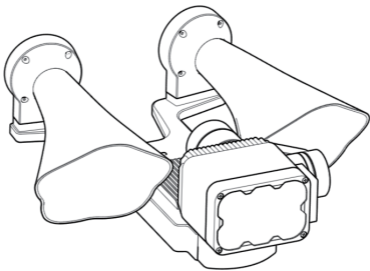
LP35

探照广播一体机

Searchlight and Broadcasting System

用户说明书 V1.1

2024.5



目录

一、产品注意事项.....	01
二、产品概述.....	01
三、安装-拆卸教程.....	03
四、czi Pilot App控制.....	05
五、音频文件上传与固件升级.....	10

Contents:

I. Product Precautions	19
II. Product Overview.....	19
III. Installation - Disassembly Tutorial.....	22
IV. czi Pilot App Control.....	24
V. Audio File Upload and Firmware Upgrade	30

I. Product Precautions

Thank you for purchasing czi products. The contents mentioned herein are related to your safety and legal rights and responsibilities. Before using this product, please read this document carefully to ensure that you have set up the product properly. Failure to follow and comply with the instructions and warnings in this document may result in injury to you and others, damage to the product or other surrounding items. This document and all related documents are subject to the final interpretation of czi. Please visit the official website at www.czi.com.cn for the latest product information.

Warnings

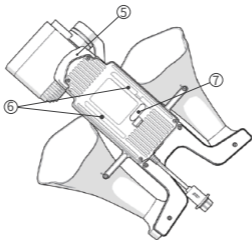
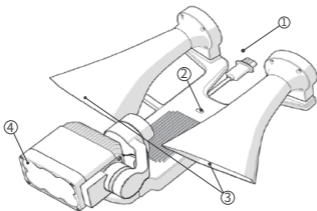
LP35 is a precision device. In case of hardware problems, please return to the manufacturer and contact the after-sales service, do not disassemble and repair by unauthorized personnel, otherwise you will lose the warranty and repair eligibility.

Precautions

1. The broadcasting function used in close range or indoor may cause permanent damage to human hearing! Please use with caution!
2. The searchlight is equipped with precision optical equipment inside, and please do not disassemble it by yourself! The light intensity is high, and please do not look directly at the light outlet!

II. Product Overview

czi LP35 Searchlight and Broadcasting System is suitable for the DJI M350RTK and M300RTK drones. Fix it on the drone by utilizing a quick release bracket and connect it to the drone through the OSDK interface. It is equipped with built-in red and blue flashing lights, effectively enhancing the recognition of police drones. The searchlight has a emitting angle of 13°, a power of 60 W, and a center illumination of 6.3 lux and the illuminance area of 917 m² at a height of 150 m, and it has a good illumination effect. At the same time, it is capable of being linked with a gimbal camera to perfectly cooperate with camera operations. The Broadcasting has strong sound penetration, with a sound pressure of 126 dB at a distance of 1 m and an effective vocal distance of 400 m. It supports live broadcasting, TTS and other functions, characterized by convenient and fast operation.



- | | |
|--------------------------------|----------------------------|
| ① OSDK Electrical interface | ② Status indicator light |
| ③ Loudspeaker | ④ Searchlight |
| ⑤ Red and blue flashing lights | ⑥ Quick release slide rail |
| ⑦ Reset button | |

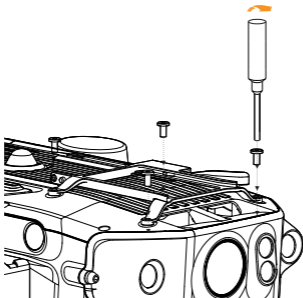
Specification

LP35	Parameters		
Dimensions / mm	L235*W220*H85		
Weight / g	≤550		
Total power / w	96 (Max)		
Electrical interface	DJI OSDK		
Bluetooth Protocol	Bluetooth v4.2 BR&EDR and Bluetooth Low Energy		
Bluetooth operating frequency band / MHz	2400-2483.5		
Operating temperature / °C	-20~+50		
Flashing light mode	Red and blue blinking, Red blinking, blue blinking		
Visual distance of flashing light	200m		
Broadcasting sound pressure	126dB@1m		
Maximum power of Broadcasting / W	30		
Effective broadcasting distance	400m		
Broadcasting method	Live broadcasting Recording upload Audio file playback (audio format MP3) Text converted to voice playback (supports text recording)		
Light flux of searchlight / lm	6000 ± 3%		
Searchlight FOV / °	13		
Central illuminance / Lux	6.3	14.4	57
Illumination distance / m	150	100	50
Spot diameter / m	34	22.8	11.4
Illumination area / m ²	917	407	102

Searchlight LED power / W	60	
Range of rotation of the gimbal	Pitch	-55°~+65°
	Horizontal	±35°
	Roll	±25°
Searchlight functions	Normally on Flashing Adjusting brightness Adjusting the gimbal angle Automatically following camera AI spot centered	
Drone platform support	M350	
APP support	czi Pilot, DJI Pilot, czi Audio (Android) , czi Assistant (PC)	

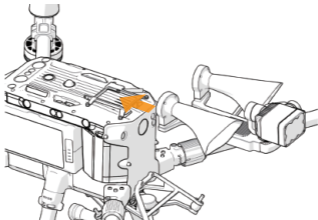
III. Installation - Disassembly Tutorial

1. Install quick release bracket on DJI M350RTK. Install the quick release bracket on the M350RTK drone by using an H2.0 hex screwdriver and M3X6 screws.

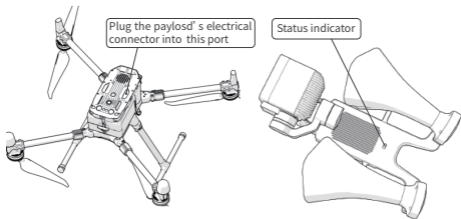


2.

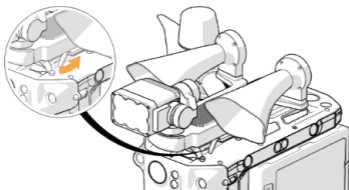
① Installation load: Slide the LP35 Searchlight and Broadcasting System along the quick release bracket slide rail to the end of the slide rail, and shake the bottom of the LP35 to ensure installation is in place.



② Connect the load OSDK line to the OSDK interface of the drone and wait for the indicator light to turn green and slowly flash, which indicates a successful connection.



3. Disassemble the load: Rotate the handle in the direction of the arrow until it reaches the end, and slide the LP35 Searchlight and Broadcasting System out of the slide rail, wait for the LP35 to slide out before releasing your hand.



IV. czi Pilot App Control

1. Firstly, download the latest czi Pilot from the official website of czi, install it on the DJI remote control, load the LP35 load onto the M350 drone, turn on the drone power supply, and open the czi Pilot software in the remote control to enter the homepage, and then you can see the following interface.



LP35

gimbal up

● Matrice 350 RTK

[connect device >>](#)

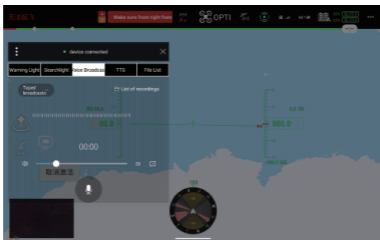
2. Click to enter the device, enter the camera screen, click the LP35 control panel button, and the following interface will pop up. The alarm light control panel controls the flashing of red and blue lights for warning, and three modes can be selected from: red and blue blinking, red blinking, and blue blinking.

- 1) Red and blue blinking: The red and blue lights have sharp flash in the order of they lighting up in turn.
- 2) Red Blinking: Only the red light flashes rapidly.
- 3) Blue Blinking: Only the blue light flashes rapidly.



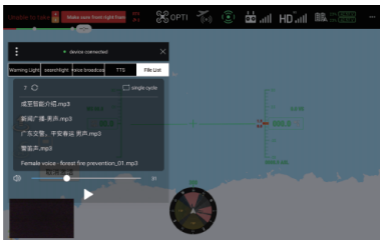
3. The searchlight control panel controls the lighting of the searchlight, and is capable of performing operations including flashing, AI spot centering, gimbal locking, gimbal fine-tuning, light brightness adjustment and so on.

- 1) Flashing: The light flashes at a faster speed.
- 2) AI spot centering: When the light spot is not in the center of the remote control screen image, according to algorithm calculation, the angle of the gimbal will be automatically adjusted to move the spot to the center of the screen.
- 3) Gimbal locking: When the gimbal locking button is pressed, the gimbal will be no longer rotates with the camera's gimbal.
- 4) Gimbal adjustment: it can be used to adjust the pitch and yaw angles of the gimbal slightly.
- 5) Gimbal resuming to center: Click to rotate the gimbal back to the neutral position.
- 6) Reset gimbal parameters: Click Confirm to clear the gimbal parameter reset and perform calibration. Before calibration, please level the load and wait patiently.




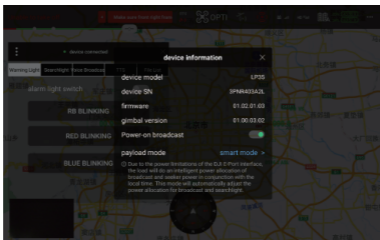
4. TS control panel can be in the text input box to enter the text you want to broadcast the content, select the appropriate language, as well as the corresponding playback speed, click on the playback, LP35 will be based on the input content as well as the selected language and speed of speech synthesis, playback of the text content. The played text can be selected to be saved as frequently used, and the next time you open the software, you can directly select the content for synthesis and playback. Click Scanning Input in the remote control network state, use mobile phone to scan the QR code and input the text on the mobile phone, you can quickly input the text to the TTS text box of the remote control. **Caution:** The reading voice and the input language need to correspond, and some languages can not be played in amixture of English and Chinese.

language type	Ability to read English	Ability to read alphabet
Cantonese	No	No
Hunanese	No	Yes
Sichuanese	No	Yes
northeastern Chinese dialect	No	Yes
He'nan dialect	No	Yes
Shaanxi dialect	Yes	Yes
Mandarin(Male)	No	No
Mandarin(female)	Yes	Yes



6. Device Information Display

Clicking on the icon  in the upper left corner, the information including the firmware version number, activation time, and usage mode of the current device can be displayed.

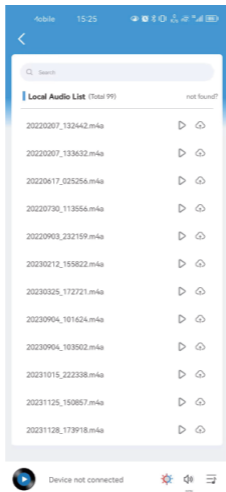


V . Audio File Upload and Firmware Upgrade

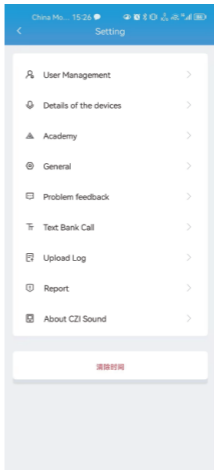
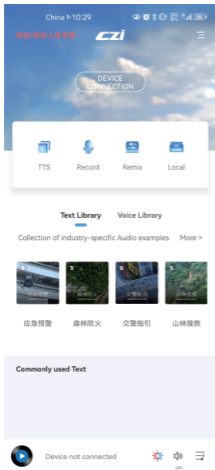
1. Smart Sound

Please download and install SmartSound from your mobile phone application shop or from the official website of ChengZhi - Service and Support - Download Centre page.

① Audio upload: Turn on the Bluetooth switch of your mobile phone, click Connect Device on the home page of Smart Sound, click Local to view the local audio list, select the desired audio and click Upload button.



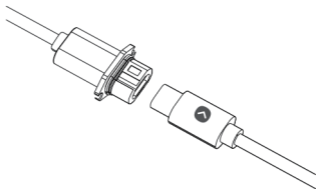
②The uploaded audio needs to be played in czi pilot.



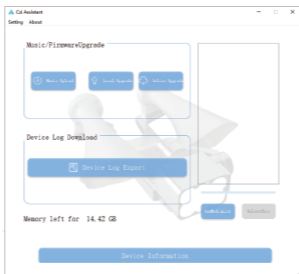
③Upgrade Firmware: Click Device Details inside Settings to jump to the device details interface, you can choose online upgrade or offline upgrade. Click update check to get the latest firmware (requires internet connection), if the current device firmware version is smaller than the latest firmware version, then you can upgrade online. If the current device firmware version is less than the latest firmware version, then you can upgrade online. Offline upgrade is to select the local bin file (can be downloaded and saved to the mobile phone locally through the official website) to upgrade.

2. Computer Software - Czi Assistant

① Open the official website of LP35 - LP35 page - Download Centre, download and install the LP35 Assistant, and then connect the LP35 to the computer with the supplied Type-C cable as shown in the picture.

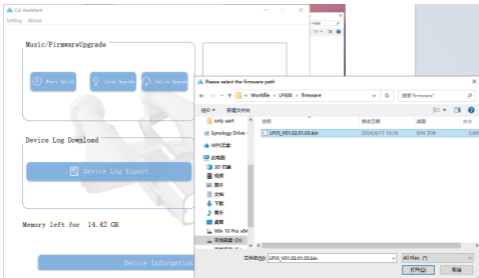


After waiting for 20s~1min (different equipment varies), the software will prompt that the load is connected and jump to the corresponding operation interface.



② Offline upgrade: Users download the firmware of the corresponding load to PC locally from the official website and upgrade this specified firmware.

Click the Offline Upgrade button, then select the firmware you have downloaded from the official website, click Select Firmware or drag and drop the firmware to start the upgrade.



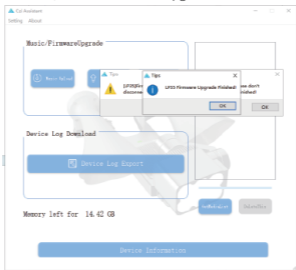
Starts transferring firmware to the device.



After the transfer is complete, the device will reboot and start upgrading. (Note: At this time only the firmware will be transferred to the device, the upgrade process is still not complete, you need to wait for the device to upgrade itself and reconnect to the ChengZhi assistant before you can disconnect the USB cable!)



When the upgrade is completed, the device will reconnect to czi Assistant and indicate that the upgrade was successful. At this time, you can click the device information button to check the firmware version, check whether the upgrade is successful.



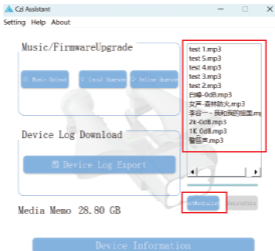
Click the "Device Information" button to check the version, activation time and other general device information.



③Audio Transmission

Query Media Catalogue: Click "Refresh Catalogue" button and wait for the device to respond to the media catalogue.

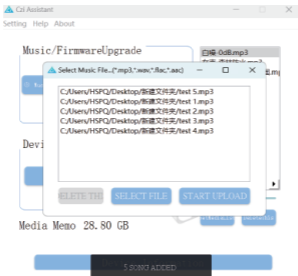
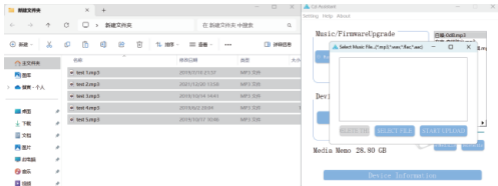
Click the "Refresh Catalogue" button and wait for the device to respond to the media catalogue.



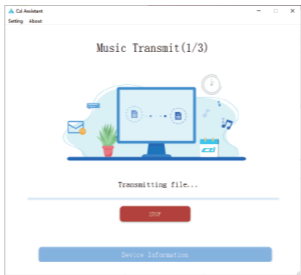
Select the media files you want to delete.



Click the Music Transfer button to bring up the pending window, copy and paste the audio files to be uploaded into the target window for uploading. Only the following four formats of mp3, flac, wav and aac are supported, and the format is saved as mp3 after uploading.



Click Start Upload to start the audio batch upload, and wait for the upload to complete.



ChengZhi Support
www.czi.com.cn
Service Hotline: 400-008-8306

Made in China